

DATA SHEET

OfficeConnect® Switches and Hubs

Key Benefits

Easy to Install and Use

Enjoy plug-and-play simplicity.

Simple Troubleshooting

Get at-a-glance network status information from front-panel diagnostic LEDs, including a unique Alert LED.

Compact Design

Save valuable small-office space with compact, ergonomic, and clippable design.

Lifetime Limited Warranty

Ensures peace of mind when purchasing OfficeConnect products; includes power adapters.

Free Telephone Support

3Com offers telephone assistance during the first 90 days, including installation and general troubleshooting.

Engineered for Small-Business Needs

The OfficeConnect family is the first solution designed specifically for small-office operations—often imitated but never equaled by other network vendors.

Specifically designed for small businesses and offices, 3Com® OfficeConnect® switches and hubs provide businesses with an integrated system of small-office networking. By installing a LAN, users can work more effectively with file and print sharing and reduce costs by sharing expensive resources as printers.

OfficeConnect products provide connectivity for every business need. For the value-conscious user, standard Ethernet hubs are ideal, while Fast Ethernet switches and hubs provide additional speed for high-volume

traffic. OfficeConnect Dual Speed Ethernet switches and hubs feature autosensing technology, allowing users to migrate to higher speeds when needed. They are available in a variety of port densities—from 4 to 16 ports.

OfficeConnect switches and hubs are a core part of the OfficeConnect family, providing small businesses with the power to share information, set up powerful, comprehensive servers, connect remote offices, and access the Internet.

OfficeConnect Family



The 3Com OfficeConnect family offers the most flexible, expandable, and integrated networking solutions for small businesses.

OfficeConnect products include:

LAN connectivity

- Network interface cards
- Switches and hubs
- Networking kits
- HP JetDirect print servers

Remote access and Internet connectivity

- LAN modems
- Cable modems
- Internet firewalls

Network server family

- Network storage servers
- 3Com Internet server

Switch or Hub?

With a hub, all users share the same bandwidth. This works well with a few users and low traffic requirements, but as you add users or implement more bandwidth-hungry software applications, competition for bandwidth can start to slow down traffic on the LAN.

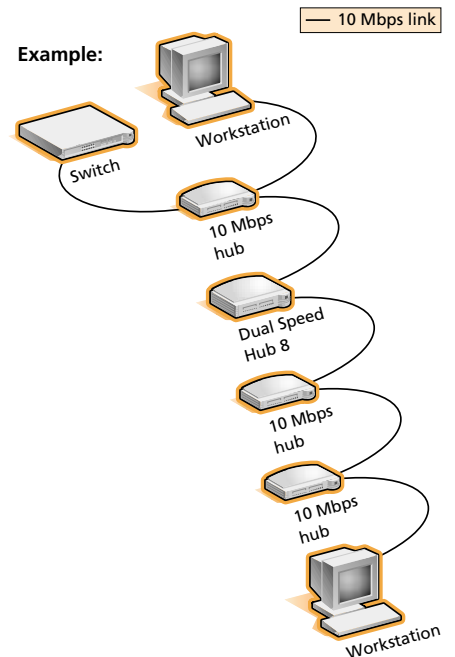
Switches are more appropriate when you need greater network performance of a high-speed server uplink, such as when connecting users to a few hubs or servers, or when connecting many power users. A switch improves performance and shortens network response times by reducing the number of users per segment. A switch does that by providing dedicated bandwidth to every device—server, PC, or hub—connected to one of its ports.

Technology Explained

Ethernet technology

Using twisted-pair cables, you can connect a maximum of four Ethernet (10 Mbps) hubs in series between workstations, or between a workstation and a nonrepeater piece of equipment (such as a switch). Each cable must not exceed 100 m (328 ft).

Since its inception, Ethernet has become the most popular topology in LANs. Based on the IEEE 802.3 standard, Ethernet has evolved over the years and now supports a range of media and significant enhancements that the original standard never did. The 10 Mbps available bandwidth can be either shared across a number of users using hubs or dedicated to workstations using switched technology.

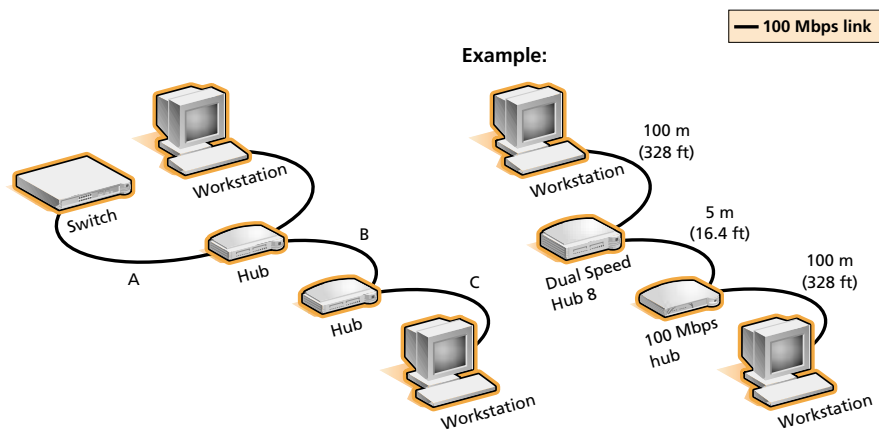


Fast Ethernet

Fast Ethernet is based on the Ethernet standard yet runs at 10 times the speed (100 Mbps). It is now one of the most popular high-speed technologies because of its cost effectiveness, stability, and compatibility with existing Ethernet LAN environments. Fast Ethernet switching allows dedicated performance between two devices.

The total length of cable (A+B+C below) between two workstations and a nonrepeater piece of equipment (such as a switch) must not exceed 205 m (672 ft). Each cable (A, B, or C) must not exceed 100 m (328 ft).

3Com recommends using Category 5 cables and that the cable (B) between the Fast Ethernet hub is not longer than 5 m (16.4 ft). This allows the maximum hub-to-workstation cable length (A or C) of 100 m (328 ft) to be used, as shown.



These rules do not apply to Fast Ethernet switches. You can connect as many OfficeConnect switches together as your business requires.

OFFICECONNECT® SWITCHES AND HUBS



OfficeConnect Dual Speed Switch 16

OfficeConnect Dual Speed Switches

OfficeConnect Dual Speed Switches are designed for small businesses that want high network performance to exchange larger data files and images, and access real-time information.

OfficeConnect Dual Speed Switches allow dedicated, high-speed connections at either 10BASE-T or 100BASE-TX, making them ideal for connecting servers or multiple hubs in small businesses or offices and providing a flexible migration path. They provide expandable connections for 5, 8, or 16 users or networked devices.

OfficeConnect Dual Speed Switches

| | 10/100 autosensing ports | Buffer memory | Autonegotiating full- and half-duplex ports | LED indicators | Priority queuing | MAC addresses supported | MDI/MDIX | Forwarding method | Telephone support and lifetime limited warranty | FCC Class B | External power supply |
|---|--------------------------|---------------|---|--|------------------|-------------------------|----------|-------------------|---|-------------|-----------------------|
| OfficeConnect Dual Speed Switch 5 (3C16790) A low port density, high-performance, Fast Ethernet switch ideal for boosting network performance with multiple hub aggregation or server connection. | 5 | 1 M | All 5 | Alert, Power, Duplex, Port status (activity, connection speed) | ✓ | 1,024 | Auto | Store & Forward | ✓ | ✓ | 11 W |
| OfficeConnect Dual Speed Switch 8 (3C16791) A popular switch ideal for connecting servers, multiple hubs, or desktops for small businesses that use bandwidth-intensive applications. | 8 | 1 M | All 8 | Alert, Power, Duplex, Port status (activity, connection speed) | ✓ | 1,024 | Auto | Store & Forward | ✓ | ✓ | 11 W |
| OfficeConnect Dual Speed Switch 16 (3C16735B) Provides high-performance switching for bandwidth-intensive applications. | 16 | 2 M | All 16 | Alert, Power, Activity, Duplex, Speed | | 2,048 | Manual | Store & Forward | ✓ | ✓ | 14.4 W |



OfficeConnect Dual Speed Hub 16

OfficeConnect Dual Speed Hubs

The OfficeConnect family of dual speed hubs provides full 100 Mbps performance and is designed for small businesses that want more performance from their network. This family of hubs delivers quick exchange of data between PCs and swift downloading from the network. OfficeConnect Dual Speed Hubs feature 10/100 autosensing technology and provide

the flexibility to connect devices at either speed—automatically assigning power where possible and offering a smooth transition from 10 Mbps to 100 Mbps.

Each hub features plug-and-play installation, requires no configuration, has an easy-to-read, front-panel display with diagnostic LEDs. All hubs are backed by 3Com's lifetime limited warranty and 90-day telephone support.

OfficeConnect Dual Speed Hubs

| | 10/100 autosensing ports | LED indicators | MAC addresses supported | MDI/MDIX port | Telephone support and lifetime limited warranty | FCC Class B | External power supply |
|---|--------------------------|---|-------------------------|---------------|---|-------------|-----------------------|
| OfficeConnect Dual Speed Hub 8 (3C16750B) A popular hub combining Fast Ethernet performance with the flexibility to expand an existing Ethernet network to Fast Ethernet. | 8 | Alert, Power, Network utilization, Port status, Collision | 1,024 | ✓ | ✓ | ✓ | 14.4 W |
| OfficeConnect Dual Speed Hub 16 (3C16751B) Ideal for Fast Ethernet connectivity with the flexibility to expand an existing Ethernet network to Fast Ethernet. | 16 | Alert, Power, Network utilization, Port status, Collision | 1,024 | ✓ | ✓ | ✓ | 14.4 W |

OFFICECONNECT® SWITCHES AND HUBS



OfficeConnect Ethernet Hub 8

OfficeConnect Ethernet Hubs

The OfficeConnect family of Ethernet hubs is specifically designed for small businesses with basic networking requirements, such as file or peripheral sharing, or for those who simply

want to add additional users to a 10BASE-T network. OfficeConnect hubs offer compatibility with legacy coax networks and provide connections for 4, 8, or 16 users or networked devices.

OfficeConnect Ethernet Hubs

| | 10BASE-T RJ-45 | 10BASE-T coax | 10BASE-T AUI | LED indicators | Network utilization (LED) | MDI-MDIX port | Telephone support and lifetime limited warranty | FCC Class B | External power supply |
|---|----------------|---------------|--------------|----------------|---------------------------|---------------|---|-------------|-----------------------|
| OfficeConnect Ethernet Hub 4 (3C16704A) A low-cost, entry-level hub, providing basic Ethernet connectivity. | 4 | | | ✓ | | ✓ | ✓ | ✓ | 11 W |
| OfficeConnect Ethernet Hub 4C (3C16703A) Ideal for entry-level networks requiring alternative media connectivity. | 4 | 1 | 1 | ✓ | ✓ | ✓ | ✓ | ✓ | 11 W |
| OfficeConnect Ethernet Hub 8 (3C16700A) A popular entry-level hub providing basic Ethernet connectivity. | 8 | | | ✓ | | ✓ | ✓ | ✓ | 11 W |
| OfficeConnect Ethernet Hub 8C (3C16701A) Ideal hub for businesses wanting to expand their existing coaxial network. | 8 | 1 | | ✓ | ✓ | ✓ | ✓ | ✓ | 11 W |
| OfficeConnect Ethernet Hub 16C (3C16702A) Provides expanded network capacity and connectivity to legacy coaxial networks. | 16 | 1 | | ✓ | ✓ | ✓ | ✓ | ✓ | 11 W |

OfficeConnect Switches and Hubs Features

| | |
|--|--|
| 10/100 autosensing ports | Allows users to connect at either 10 Mbps or 100 Mbps to the switch or hub. The switch or hub will operate at the highest speed possible, optimizing network performance and user flexibility. |
| Alert LED | A unique LED present on all OfficeConnect switches and hubs provides additional diagnostic information. |
| Auto MDI/MDIX | This feature, available on new OfficeConnect Dual Speed Switch 5 (3C16790) and Switch 8 (3C16791), eliminates most common cabling problems (see MDI/MDIX push button switch). |
| Compact and clippable design | New, one-piece clipping system lets users connect up to four units in a stack. |
| External power supply | Provides more flexibility and reduces power requirements in the product, eliminating the need for a noisy fan. |
| FCC Class B | Indicates that a product is certified for use in domestic as well as office environments (more stringent classification than Class A). |
| Fully compatible with leading operating systems | OfficeConnect units support Novell NetWare, Microsoft Windows 95, 98, 2000, Windows NT, and other leading software systems, giving the widest range of backward compatibility with existing office software. |
| Full duplex (switches only) | Automatically doubles the throughput (to 20 Mbps or 200 Mbps) when ports are connected to other full-duplex devices or ports. |
| Lifetime limited warranty and telephone support | Provides complete piece of mind. |
| MDI/MDIX push button switch | Enables direct connection to a server, end station, or another switch or hub, using regular straight-through cables. |
| Network utilization meter (available on most OfficeConnect hubs) | Indicates how much of the network bandwidth is in use. These LEDs are continually updated to show when the network needs more bandwidth. |
| Priority queuing (OfficeConnect Dual Speed Switches 5 and 8) | Ensures that real-time applications (such as audio or video) take priority so they can run effectively, even during bursts of high traffic load. |

OfficeConnect LED Indicators

As this front view of the OfficeConnect Fast Ethernet Hub 8 illustrates, each OfficeConnect unit offers a variety of LED indicators, including an Alert LED to allow quick monitoring of hub and network activity. The Alert LED gives users immediate notification of problems, such as excessive network use, without requiring special technical knowledge.

Alert LED

(Orange)
Alerts you to excessive network use or an isolated (partitioned) 10BASE-T and 100BASE-TX port.

Power LED

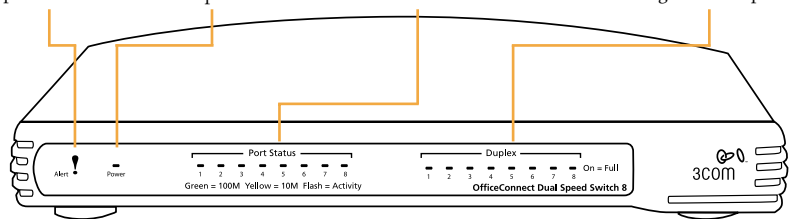
(Green) Indicates that the power supply to the unit is present.

Port Status LEDs

(Green/Yellow) Indicate the status of each port. If green, there is a link present at 100 Mbps. If yellow, there is a link present at 10 Mbps. If the LED is off, nothing is connected. Flashing of an LED indicates activity over that link.

Duplex Indicator

(Orange) If the LED is orange, the link is running at full duplex. If the LED is off but there is a link on that port, that link is running at half duplex.



Specifications

OfficeConnect Hubs

OfficeConnect hubs come with a user guide, power adapter, one-piece clipping system, and rubber feet.

OfficeConnect Ethernet Hub 4 (10BASE-T Hub) 3C16704A

Connectors:

4 RJ-45 ports for 10BASE-T twisted pair

Dimensions:

Width: 228 mm (9.1 in)

Height: 41.8 mm (1.6 in)

Depth: 135.4 mm (5.3 in)

Weight: 500 g (1.1 lb)

Power: 11 VA

Functional:

ISO 8802/3; IEEE 802.3; EMC; EN 55022 Class B; EN 55024; EN 61000-3-2, EN 61000-3-3; FCC Part 15 Class B; ICES-003 Class B; VCCI Class B; AS/NZS 3548 Class B

Environmental: EN 60068 (IEC 68)

Safety:

UL 1950; EN 60950; CSA 22.2 #950, IEC 950

OfficeConnect Ethernet Hub 4C (10BASE-T Hub) 3C16703A

Connectors:

4 RJ-45 ports for 10BASE-T twisted pair; one BNC port for 10BASE2 thin Ethernet (50 ohm); one AUI

Dimensions:

Width: 228 mm (9.1 in)

Height: 41.8 mm (1.6 in)

Depth: 135.4 mm (5.3 in)

Weight: 500 g (1.1 lb)

Power: 11 VA

Functional:

ISO 8802/3; IEEE 802.3; EMC; EN 55022 Class B; EN 55024; EN 61000-3-2, EN 61000-3-3; FCC Part 15 Class B; ICES-003 Class B; VCCI Class B; AS/NZS 3548 Class B

Environmental: EN 60068 (IEC 68)

Safety:

UL 1950; EN 60950; CSA 22.2 #950, IEC 950

OfficeConnect Ethernet Hub 8 (10BASE-T Hub) 3C16700A

Connectors:

8 RJ-45 ports for 10BASE-T twisted pair

Dimensions:

Width: 228 mm (9.1 in)

Height: 41.8 mm (1.6 in)

Depth: 135.4 mm (5.3 in)

Weight: 500 g (1.1 lb)

Power: 11 VA

Functional:

ISO 8802/3; IEEE 802.3; EMC; EN 55022 Class B; EN 55024; EN 61000-3-2, EN 61000-3-3; FCC Part 15 Class B; ICES-003 Class B; VCCI Class B; AS/NZS 3548 Class B

Environmental: EN 60068 (IEC 68)

Safety:

UL 1950; EN 60950; CSA 22.2 #950, IEC 950

OfficeConnect Ethernet Hub 8C (10BASE-T Hub) 3C16701A

Connectors:

8 RJ-45 ports for 10BASE-T twisted pair; one BNC port for 10BASE2 thin Ethernet (50 ohm)

Dimensions:

Width: 228 mm (9.1 in)

Height: 41.8 mm (1.6 in)

Depth: 135.4 mm (5.3 in) + 15.2 mm (0.6 in) for coaxial port

Weight: 550 g (1.2 lb)

Power: 11 VA

Functional:

ISO 8802/3; IEEE 802.3; EMC; EN 55022 Class B; EN 55024; EN 61000-3-2, EN 61000-3-3; FCC Part 15 Class B; ICES-003 Class B; VCCI Class B; AS/NZS 3548 Class B

Environmental: EN 60068 (IEC 68)

Safety:

UL 1950; EN 60950; CSA 22.2 #950, IEC 950

OfficeConnect Ethernet Hub 16C (10BASE-T Hub) 3C16702A

Connectors:

16 RJ-45 ports for 10BASE-T twisted pair; one BNC port for 10BASE2 thin Ethernet (50 ohm)

Dimensions:

Width: 228 mm (9.1 in)

Height: 60.6 mm (2.4 in)

Depth: 185.4 mm (7.3 in)

Weight: 960 g (2.1 lb)

Power: 11 VA

Functional:

ISO 8802/3; IEEE 802.3; EMC; EN 55022 Class B; EN 55024; EN 61000-3-2, EN 61000-3-3; FCC Part 15 Class B; ICES-003 Class B; VCCI Class B; AS/NZS 3548 Class B

Environmental: EN 60068 (IEC 68)

Safety:

UL 1950; EN 60950; CSA 22.2 #950, IEC 950

OfficeConnect Dual Speed Hub 8 (10BASE-T/ 100BASE-TX Hub) 3C16750B

Connectors:

8 RJ-45 10BASE-T/100BASE-TX ports

Dimensions:

Width: 228 mm (9.1 in)

Height: 60.6 mm (2.4 in)

Depth: 185.4 mm (7.3 in)

Weight: 960 g (2.1 lb)

Power: 33 VA

Functional:

ISO 8802/3; IEEE 802.3; EMC; EN 55022 Class B; EN 55024; EN 61000-3-2, EN 61000-3-3; FCC Part 15 Class B; ICES-003 Class B; VCCI Class B; AS/NZS 3548 Class B

Environmental: EN 60068 (IEC 68)

Safety:

UL 1950; EN 60950; CSA 22.2 #950, IEC 950

Specifications *(continued)***OfficeConnect Dual Speed Hub 16 (10BASE-T/100BASE-TX Hub) 3C16751B****Connectors:**

16 RJ-45 10BASE-T/100BASE-TX ports

Dimensions:

Width: 228 mm (9.1 in)
 Height: 60.6 mm (2.4 in)
 Depth: 185.4 mm (7.3 in)
 Weight: 1000 g (2.2 lb)

Power: 53 VA**Functional:**

ISO 8802/3; IEEE 802.3; EMC; EN 55022 Class B;
 EN 55024; EN 61000-3-2, EN 61000-3-3, FCC Part
 15 Class B; ICES-003 Class B; VCCI Class B; AS/NZS
 3548 Class B

Environmental: EN 60068 (IEC 68)**Safety:**

UL 1950; EN 60950; CSA 22.2 #950, IEC 950

OfficeConnect Switches

OfficeConnect switches come with a user guide,
 power adapter, one-piece clipping system, and
 rubber feet.

OfficeConnect Dual Speed Switch 5 (10BASE-T/100BASE-TX Hub) 3C16790**Connectors:**

5 RJ-45 10BASE-T/100BASE-TX ports

Dimensions:

Width: 228 mm (9.1 in)
 Height: 41.8 mm (1.6 in)
 Depth: 135.4 mm (5.3 in)
 Weight: 600 g (1.3 lb)

Power: 11 VA**Functional:**

ISO 8802/3; IEEE 802.3; EMC; EN 55022 Class B;
 EN 55024; EN 61000-3-2, EN 61000-3-3, FCC Part
 15 Class B; ICES-003 Class B; VCCI Class B; AS/NZS
 3548 Class B

Environmental: EN 60068 (IEC 68)**Safety:**

UL 1950; EN 60950; CSA 22.2 #950, IEC950

OfficeConnect Dual Speed Switch 8 (10BASE-T/100BASE-TX Hub) 3C16791**Connectors:**

8 RJ-45 10BASE-T/100BASE-TX ports

Dimensions:

Width: 228 mm (9.1 in)
 Height: 41.8 mm (1.6 in)
 Depth: 135.4 mm (5.3 in)
 Weight: 600 g (1.3 lb)

Power: 11 VA**Functional:**

ISO 8802/3; IEEE 802.3; EMC; EN 55022 Class B;
 EN 55024; EN 61000-3-2, EN 61000-3-3, FCC Part
 15 Class B; ICES-003 Class B; VCCI Class B; AS/NZS
 3548 Class B

Environmental: EN 60068 (IEC 68)**Safety:**

UL 1950; EN 60950; CSA 22.2 #950, IEC 950

OfficeConnect Dual Speed Switch 16 (10BASE-T/100BASE-TX Hub) 3C16735B**Connectors:**

8 RJ-45 10BASE-T/100BASE-TX ports

Dimensions:

Width: 228 mm (9.1 in)
 Height: 60.6 mm (2.4 in)
 Depth: 185.4 mm (7.3 in)
 Weight: 1,000 g (2.2 lb)

Power: 13.2 VA**Functional:**

ISO 8802/3; IEEE 802.3; EMC; EN 55022 Class B;
 EN 55024; EN 61000-3-2, EN 61000-3-3, FCC Part
 15 Class B; ICES-003 Class B; VCCI Class B; AS/NZS
 3548 Class B

Environmental: EN 60068 (IEC 68)**Safety:**

UL 1950; EN 60950; CSA 22.2 #950, IEC 950

Ordering Information

| | |
|------------------------------------|----------|
| OfficeConnect Dual Speed Switch 5 | 3C16790 |
| OfficeConnect Dual Speed Switch 8 | 3C16791 |
| OfficeConnect Dual Speed Switch 16 | 3C16735B |
| OfficeConnect Dual Speed Hub 8 | 3C16750B |
| OfficeConnect Dual Speed Hub 16 | 3C16751B |
| OfficeConnect Ethernet Hub 4 | 3C16704A |
| OfficeConnect Ethernet Hub 4C | 3C16703A |
| OfficeConnect Ethernet Hub 8 | 3C16700A |
| OfficeConnect Ethernet Hub 8C | 3C16701A |
| OfficeConnect Ethernet Hub 16C | 3C16702A |

3Com Corporation, Corporate Headquarters, 5400 Bayfront Plaza, P.O. Box 58145, Santa Clara, CA 95052-8145

To learn more about 3Com solutions, visit www.3com.com. 3Com Corporation is publicly traded on Nasdaq under the symbol COMS.

Copyright © 2001 3Com Corporation. All rights reserved. 3Com and OfficeConnect are registered trademarks of 3Com Corporation. The 3Com logo is a trademark of 3Com Corporation. Windows and Windows NT are trademarks of Microsoft. NetWare is a trademark of Novell. All other company and product names may be trademarks of their respective companies. All specifications are subject to change without notice.

Printed in the U.S.A.

400317-012 04/01

